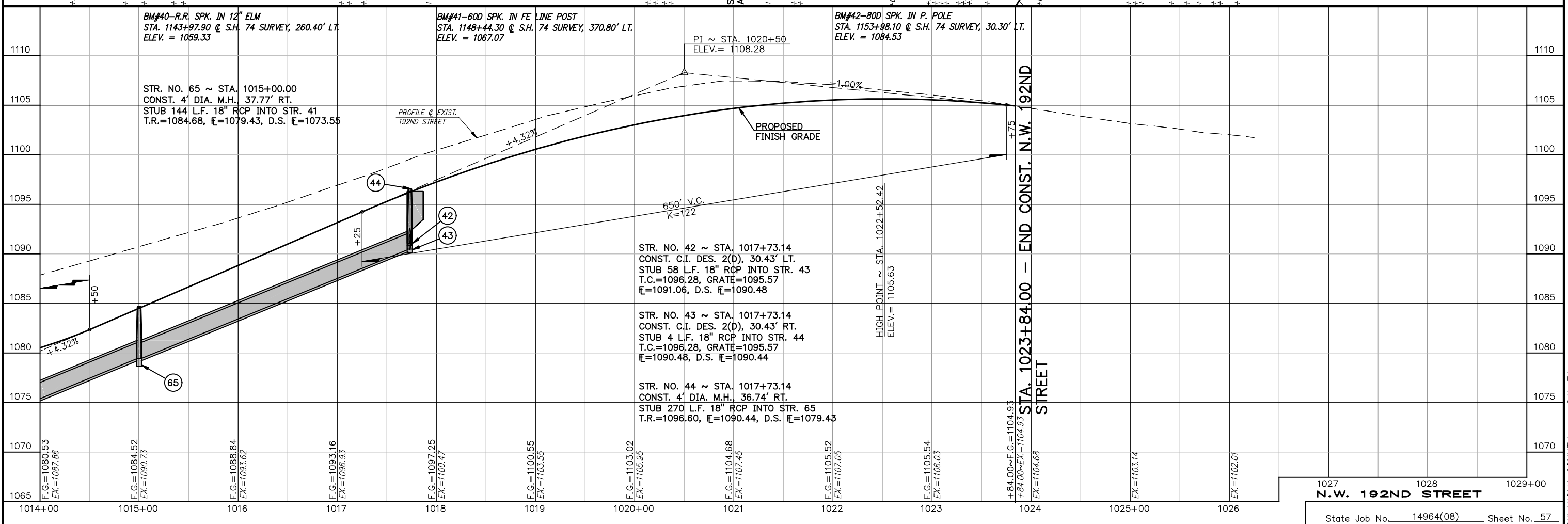
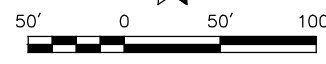


SEE SURVEY DATA SHEETS FOR @ SURVEY

CAUTION
POWER OVERHEAD OIL LINE



BM#40-R.R. SPK. IN 12" ELM
STA. 1143+97.90 @ S.H. 74 SURVEY, 260.40' LT.
ELEV. = 1059.33

BM#41-60D SPK. IN FE LINE POST
STA. 1148+44.30 @ S.H. 74 SURVEY, 370.80' LT.
ELEV. = 1067.07

BM#42-80D SPK. IN P. POLE
STA. 1153+98.10 @ S.H. 74 SURVEY, 30.30' LT.
ELEV. = 1084.53

STR. NO. 65 ~ STA. 1015+00.00
CONST. 4' DIA. M.H., 37.77' RT.
STUB 144 L.F. 18" RCP INTO STR. 41
T.R.=1084.68, E=1079.43, D.S. E=1073.55

STR. NO. 42 ~ STA. 1017+73.14
CONST. C.I. DES. 2(D), 30.43' LT.
STUB 58 L.F. 18" RCP INTO STR. 43
T.C.=1096.28, GRATE=1095.57
E=1091.06, D.S. E=1090.48

STR. NO. 43 ~ STA. 1017+73.14
CONST. C.I. DES. 2(D), 30.43' RT.
STUB 4 L.F. 18" RCP INTO STR. 44
T.C.=1096.28, GRATE=1095.57
E=1090.48, D.S. E=1090.44

STR. NO. 44 ~ STA. 1017+73.14
CONST. 4' DIA. M.H., 36.74' RT.
STUB 270 L.F. 18" RCP INTO STR. 65
T.R.=1096.60, E=1090.44, D.S. E=1079.43

STA. 1023+84.00 - END CONST. N.W. 192ND STREET

N.W. 192ND STREET

State Job No. 14964(08) Sheet No. 57

OKLAHOMA COUNTY S.H. 74